



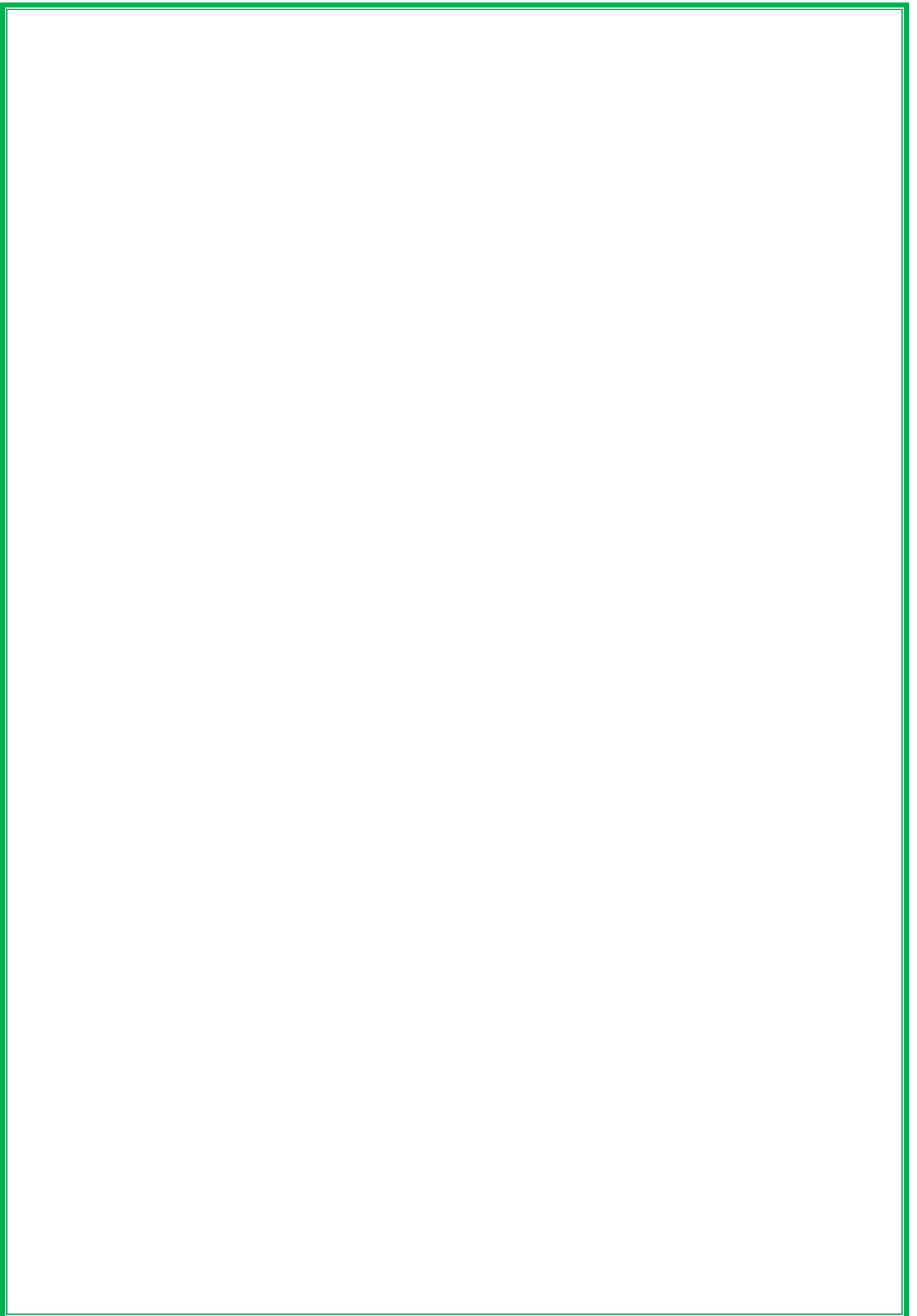
KALAMUNDA SENIOR HIGH SCHOOL

An Independent Public School

YEAR 9

COURSE INFORMATION

2017



**Estimated course costs are intended as a guide only and are subject to change.*

➤ GATE Art

**Estimated cost: \$20 Voluntary Contribution + \$60 Charge + \$200 Program Fee*

Students who have been accepted into the Gifted and Talented Visual Arts Program must select Gifted and Talented Visual Arts (Full Year) which counts as **two** choices.



Kalamunda Performing Arts

**Estimated cost: \$45 Voluntary Contribution + \$80 Program Fee*

Students who have been accepted into the Performing Arts Program must select 9KPA (Full Year) which counts as **four** choices.

➤ 2 Dimensional Art

**Estimated cost: \$10 Voluntary Contribution + \$30 Charge*

This subject will enable students to express themselves through a range of 2D mediums which include drawing, painting and printmaking.

➤ 3 Dimensional Art

**Estimated cost: \$10 Voluntary Contribution + \$30 Charge*

This course will allow students to express themselves through a wide range of fun mediums including clay, wire and found objects.



There will also be drawing needed to design the things to make!

Dance 1 - Creative Dance

**Estimated cost: \$10 Voluntary Contribution + \$20 Charge*

This course introduces students to the world of dance-making whilst enhancing their fundamental movement skills. Students are encouraged to experience all the roles of a dancer, learning dance skills such as isolations, turns and leaps and also choreographic skills such as cannon, motif, repetition and retrograde.

➤ Dance 2 - Dance Through Time

**Estimated cost: \$10 Voluntary Contribution + \$20 Charge*

This course will not only give students the opportunity to learn dances from the past and present, it also aims to look at dance in different cultures. Students will have the opportunity to study various dances in history including Tribal, Ancient, Can-Can, Charleston, Rock 'n' Roll, Spanish, Modern and Hip Hop/Street Dance. Students examine why people dance and how people make and perform dance. Students will be given the opportunity to perform in this course.

➤ Theatre Arts – Improvisation and Group Devised Play-building

**Estimated cost: \$10 Voluntary Contribution + \$25 Charge*

Improvisation is the sport of theatre, where students learn to let themselves say the first thing that comes to mind when they are in the arena. Students will revise movement skills while building improvisation skills with a series of fun 'theatre sport' games. In the second term students will use these improvisation skills to create and perform their own play. They will learn play writing skills, voice skills; as well as how to work with others as part of a small cast. Students will have the opportunity to



perform on stage in a Lower School performance night for family and friends at the end of the semester.

➤ Media 2

**Estimated cost: \$10 Voluntary Contribution + \$30 Charge*

Students will explore different areas of media including film and television. They will also make a media production of their own.

Students will research fame over the years, look at how stars are used and abused by the media, and examine if anyone can be famous. This course is a good introduction for those wanting to do Year 11 Media Production & Analysis in Senior School.

➤ Media 3

**Estimated cost: \$10 Voluntary Contribution + \$30 Charge*

Media 3 will look at the “new media” world of gaming, music videos and social networking. Students will also create a production of their own.

➤ Music Full Year (Counts as two options)

Students in the SIM Instrumental Music Program are required to study this course for the full year.

**Estimated cost: \$20 Voluntary Contribution + \$60 Charge*

The musical genres covered in Year 9 are Reggae, Funk, Classical Music and Film & TV Music. In these courses, students will be provided with activities and learning opportunities in all aspects of music – notation, Kodaly – Solfa, listening, analysing, performing, arranging, composing and music culture & history. Assessment types will include Performance



(ensemble and individual), Listening, Composing, Theory and research (Music History). It is desirable but not essential to have completed Music in Year 8.

➤ Photography

**Estimated cost: \$10 Voluntary Contribution + \$50 Charge*

In Year 9 Portrait Photography, students will investigate the practical and theoretical aspects of black and white film and digital photography. Students will learn about the



manual functions on a camera, image composition, and digital manipulation using Adobe Photoshop. Students are introduced to the darkroom environment and will learn how to process film and develop their own black and white imagery using darkroom processes.

Students will understand the historical and conceptual underpinnings of photographic artworks through the exploration of past and contemporary photographic artists. Students will experiment with camera technology and create a portfolio of film and digital imagery based upon art and design theory and its application to produce still-life, macro and other compositional arrangements.

METHOD OF ASSESSMENT

Portfolio of practical tasks (Imagery) and written tasks; research, and investigation and response.

➤ Portrait Photography

**Estimated cost: \$10 Voluntary Contribution + \$45 Charge*

In this course students will investigate the practical and theoretical aspects of black and white film and digital photography as it relates specifically to portraiture. Students will learn about the manual functions on a camera, image composition, and digital

manipulation using Adobe Photoshop. Students are introduced to the darkroom environment and will learn how to process film and develop their own black and white imagery using darkroom processes.

Students will understand the historical and conceptual underpinnings of photographic portrait artworks through the exploration of past and contemporary photographic portrait artists. Students will experiment with camera technology and create a portfolio of film and digital imagery based upon art and design theory and its application. Students develop photographic studio skills in lighting and learn the basics of photo shoot arrangement for portraits eg. backdrops, props, costume and make-up. Students develop photographic studio skills in lighting and learn the basics of photo shoot arrangement for portraits eg. backdrops, props, costume and make-up. Students learn to create simple lighting plans to achieve a variety of effects within their portrait imagery.

METHOD OF ASSESSMENT

Portfolio of practical tasks (Imagery) and written tasks; research and investigation, and response.

➤ Metal Jewellery

**Estimated cost: \$10 Voluntary Contribution + \$30 Charge*

This course provides students with the opportunity to develop skills in the cutting and forming of different types of metal to a stage where they can design their own projects.

A variety of jewellery items will be made. As skills develop students will be encouraged to design and construct items of their own choice.

➤ Model Making

**Estimated cost: \$10 Voluntary Contribution + \$30 Charge*

Students will develop skills and the knowledge required to manipulate a variety of materials including wood, metal and plastic to produce a



variety of interesting models. The technology process will be utilised and developed whilst studying model making.

➤ Technical Drawing

**Estimated cost: \$10 Voluntary Contribution + \$15 Charge*

Through a variety of activities, students will learn how to read drawings and use a variety of techniques to present drawings which create impact.

Throughout the course a folio of work will be developed by students.

Wood Design



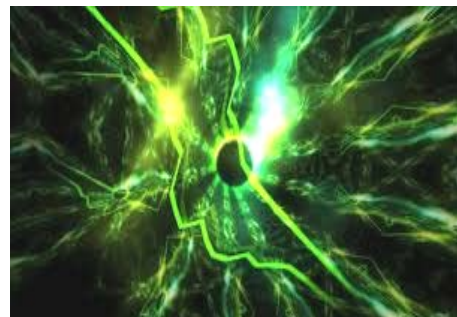
**Estimated cost: \$10 Voluntary Contribution + \$40 Charge*

This course is designed to develop skills in working with wood to construct small projects.

Students will be given the opportunity to use the Technology Process to create individual projects from wood.

➤ Technology Design & Production

**Estimated cost: \$10 Voluntary Contribution + \$20 Charge*



This course takes a really practical and hands on approach to Information Technology. Using some of the latest software and hardware available, students will design and produce a range of products and learn some very useful IT skills along the way. Students will develop skills and knowledge through a series of design challenges using such software and hardware as Comic Life, Photoshop, Lego Mindstorm (Robotics) and 3D printing. For example, students will develop their own superhero based on popular / underground comic culture and produce and publish their own comic book.

➤ Animation

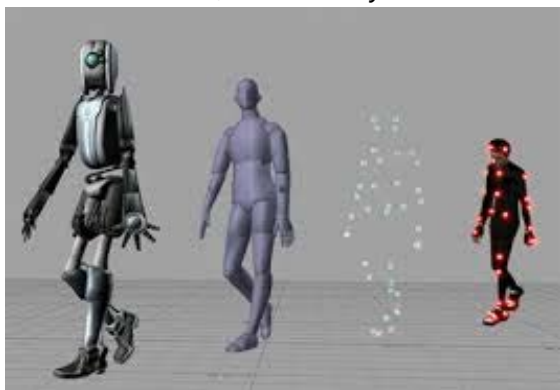
**Estimated cost: \$10 Voluntary Contribution + \$10 Charge*

This course allows students to work through the process of animation - starting at the planning stage and working towards the development stage. Students will create a working animation to be incorporated in an electronic product.

Software usage includes MS PowerPoint and Movie Maker, Adobe Flash, InDesign and Photoshop. Hardware used includes scanners, digital movie and still cameras.

➤ Electronic Game Design

**Estimated cost: \$10 Voluntary Contribution +*



\$10 Charge

This course allows students to further their skills in the world of electronic game design with an emphasis on developing software skills and design knowledge. The course will look at the history of electronic game design and how it has influenced current and future designs. Software usage includes Adobe flash, Photoshop and Fireworks, as well as games development software.

➤ Webpage Design

**Estimated cost: \$10 Voluntary Contribution + \$10 Charge*

The overall outcome of this course is for students to design and build a website. There is an emphasis on online techniques. Software usage includes Microsoft PowerPoint and Movie Maker, Adobe Flash, Photoshop and Dreamweaver.

➤ Fashion Sewing

**Estimated cost: \$10 Voluntary Contribution +*



\$40 Charge

No previous sewing experience required! The emphasis in this course is to develop basic sewing skills that can be used to create many exciting effects with fabrics, trims and products. Students will have the opportunity to design and make a variety of fashion items.

➤ Caring for Children

**Estimated cost: \$10 Voluntary Contribution + \$40 Charge*

This course will examine the role of food in our lives – the social, nutritional, ethical and vocational role that it plays in all cultures. Students will develop their food production (cooking) skills through a wide range of recipes from around the world. Students will learn about safety in the kitchen, how to prepare and preserve food and present their cooking like a Masterchef. This course is very useful for any student wanting to be a little more independent or adventurous in the kitchen. Through an emphasis on craft activities, students explore caring for children aged 2 years and over. This is a great course for babysitters or anyone planning a career in childcare.

➤ Foods



**Estimated cost: \$10 Voluntary Contribution + \$60 Charge*

This course will examine the role of food in our lives – the social, nutritional, ethical and vocational role that it plays in all cultures. Students will develop their food production (cooking) skills through a wide range of recipes from around the world. Students will learn about safety in the kitchen, how to prepare and preserve food and present their cooking like a Masterchef. This course is very useful for any student wanting to be a little more independent or adventurous in the kitchen.

➤ Outdoor Adventure Program (Counts as two options)

**Estimated cost: \$20 Voluntary Contribution + \$500 Program Fee*

Students who have been accepted into the Outdoor Adventure Program are required to study the course for the full year.

➤ Outdoor Recreation (Roping)

**Estimated cost: \$10 Voluntary Contribution + \$40 Charge*

This is a highly practical subject, where students get to participate in abseiling and roping activities. This usually includes a day trip to Statham's Quarry to abseil the 35 and 40 metre cliffs.

➤ Advanced Soccer 1



**Estimated cost: \$10 Voluntary Contribution + \$20 Charge*

This course is designed for students who already have some experience playing soccer. It aims to enhance the skill, strategies and tactics of

the game. There will be an emphasis on developing students' skill to a high level or club standard, plus coaching and umpiring. There may be opportunity to compete against other students within the area outside of school hours.

Students studying the course for the **full** year will also gain experience in umpiring and coaching.

➤ Advanced Netball

**Estimated cost: \$10 Voluntary Contribution + \$20 Charge*

This course is designed for girls who already have some experience playing netball. It aims to enhance the skills, strategies, and tactics of the game. There will be an emphasis on developing students' skills to a high level or club standard, plus coaching and umpiring. There may be opportunity to compete against others schools within the area outside of school hours.

Students studying the course for the **full** year will also gain experience in umpiring and coaching.

LANGUAGES

➤ Indonesian, Italian and Japanese

Students must study the language in both Semester 1 and 2.

Languages are a life skill, like driving a car, and a skill highly valued by employers.

Moreover, learning languages not only teaches you how to interact with speakers



of other languages, it also helps you to see things from a range of different perspectives, making you more resourceful and creative.

The Year 9 language course offers students an opportunity to complete **Part 1**

of the **Certificate II in Applied Languages** as outlined by the Central Institute of Technology. The course covers *Social Cluster*, which focuses on developing basic speaking, reading, writing and listening skills necessary to continue towards completing the full certificate in Year 10.

Students will learn a style of language appropriate to the *social context*, for example, school/friends/peers, family relations, daily routine or interests and pastime.

