

**KALAMUNDA  
SENIOR HIGH SCHOOL**

*An Independent Public School*

Ph: 08 9293 6400

Fax: 08 9293 4448

Web: [kalamundashs.wa.edu.au](http://kalamundashs.wa.edu.au)

Email: [kalamunda.shs@education.wa.edu.au](mailto:kalamunda.shs@education.wa.edu.au)

Address: 12 Cotherstone Road Kalamunda WA 6076



# **YEAR 9**

# **ELECTIVE**

# **INFORMATION**

# **2019**

# Letter to Parents

Dear Parent/Guardian,

Course Selections for students entering Year 9 in 2019 at Kalamunda Senior High School will commence from **4pm, Tuesday 11 September**.

Your child has been given their own copy of this letter, which includes login credentials to make online course selections. Students have attended an information session to help them in making their selections.

To assist with the selection of their electives for next year students and parents can now access Year 9 course information from the Kalamunda Senior High School website (Kalamundashs.wa.edu.au).

Under the **Year 9** heading of the **PARENT QUICK LINKS** page you will find:

- ▶ A link to the Year 9 Course Information Booklet 2019
- ▶ A link to [Subject Selection Online](#) (SSO) - not supported by Internet Explorer.

From 4pm Tuesday 11 September, parents and students will have access to Subject Selection Online (SSO) to record their selections.



At the login prompt enter the 8 digit student number and the PIN (printed at the top of the student copy of this letter). Once logged in to SSO, follow the instructions provided.

All students will need to print their Selections Report, sign it, have a parent sign, and return the report to the school office by **Thursday 20 September**.

**NOTE:** SSO will not allow you to generate the selections report until you have completed all required sections.

Students who will not be returning to Kalamunda SHS next year must complete only the relevant questions, including the school they will be attending, and return their signed Selections Report to the front office. Any student who is unsure whether they are returning next year should complete the selections as if they will be returning.

**SSO access will close for students and parents at 7am on Thursday 20 September.**

If you encounter any problems using SSO please contact the school office on 9293 6400 or email [noelene.clarke@education.wa.edu.au](mailto:noelene.clarke@education.wa.edu.au).

Helen Deacon  
Principal

All current Year 8 students are required to complete this selection process.

Students enrolling at Kalamunda Senior High School mid-year will select their courses at their pre-enrolment interview.

**Close-off date for selections is Thursday 20 September 2018**

### **Course Selections**

Students should choose their electives carefully as changes mid-course are not recommended.

Students are encouraged to read through the following course information.

Once logged in to SSO students are required to meet the following requirements:

- ▶ Click the i symbol to view information about each course
- ▶ Costs are indicative only and subject to change
- ▶ Students choosing a special program must have been officially selected for that course
- ▶ GATE Art is a year-long course
- ▶ All students (except KPA) must select at least ONE course from the Physical Education area
- ▶ KPA is a year-long course. KPA students **do not** select Physical Education
- ▶ Students choosing a language must have studied that language in Year 9. Language is a year-long course
- ▶ Only students continuing their study with IMMS can select Music
- ▶ Apart from year long courses all subjects with the same code can only be selected once.

### **IMPORTANT NOTE:**

Course availability can be affected by popularity, staffing, resources and timetabling constraints. Although the school makes every effort to accommodate students' choices, selections are your preferred electives only and **are not a guarantee of placement.**

**Students who return their course selection report first have a greater chance of gaining a place in their preferred courses.**

## THE ARTS

### ➤ **GATE Art (full year - two electives)**

\*Estimated cost: \$20 Voluntary Contribution + \$60 Charge + \$200 Program Fee

Students who have been accepted into the Gifted and Talented Visual Arts Program must select Gifted and Talented Visual Arts (Full Year) which counts as two choices.

### ➤ **Kalamunda Performing Arts (full year - four electives) - General (Theatre, Dance, Music)**

\*Estimated cost: \$40 Voluntary Contribution + \$80 Program Fee

Students who have been accepted into the Performing Arts Program must select 9KPA. The dance component of this course will cover the PE requirement so students will not take a separate Physical Education class.

### ➤ **Kalamunda Performing Arts - Music (full year - two electives)**

\*Estimated cost: \$20 Voluntary Contribution + \$80 Program Fee

Students who have been accepted into the Performing Arts Program - Music must select 9KPAM (Full Year) which counts as two options. Students in the Year 8 KPA specialist music course will be automatically enrolled in this course for the full year. Students in the IMMS Instrumental Music Program are required to study this course for the full year.

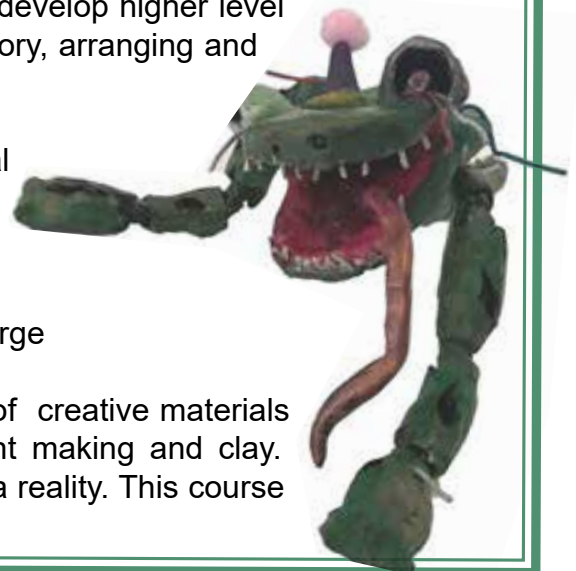
In Year 9 students stream into two areas of specialisation; Singer Songwriters who explore compositional songwriting skills, and Instrumental Specialists who specialise in developing higher level instrumental skills. These skills are put into practice in class performance tasks and musical performances over the year. Students also continue to develop higher level musicianship skills in the areas of aural perception, theory, arranging and composition.

They will also be involved in KPA productions and musical theatre.

### ➤ **Creating Art**

\*Estimated cost: \$10 Voluntary Contribution + \$35 Charge

This course is an opportunity to explore a wide range of creative materials both 2D and 3D, and includes drawing, painting, print making and clay. Students will be taught the skillset to make their ideas a reality. This course can be selected by itself or as well as Exploring Art.





## ➤ **Exploring Art**

\*Estimated cost: \$10 Voluntary Contribution + \$35 Charge

This course can be taken alone or as a complement to Creating Art. The art and design experience will be fun, challenging and creative while building on students skill foundations. Activities will include opportunities to work in flat and sculptural media.

## ➤ **Dance - Creative Dance**

\*Estimated cost: \$10 Voluntary Contribution + \$20 Charge

This course introduces students to the fundamental skills of choreography, including structuring methods such as binary, turnery and rondo, and the use of devices for manipulating movement such as cannon, motif and repetition. Students will enhance their dance technique. Skills worked on include fitness, strength, flexibility, kicks, turns, leaps and isolations. This course includes performing in a Dance show.



As students are given performance opportunities, social skills, technique and fitness are all important aspects of this course.

## ➤ **Dance - Dance Through Time**

\*Estimated cost: \$10 Voluntary Contribution + \$20 Charge

Dance Through Time gives students the opportunity to learn dances from the past and present placing dances in their historical and cultural context. Students will have the opportunity to study various dances examples may include; Charleston, Rock 'n' Roll, Flamenco, Can Can, old school Hip Hop. Students examine why people dance and how people make and perform dance. This course includes the opportunity to perform in a Dance show.

## ➤ **Theatre Arts – Melodrama!**

\*Estimated cost: \$10 Voluntary Contribution + \$25 Charge

In this semester-long course students will learn about Melodrama which is a style of acting that is heightened and exaggerated, exploring the use of 'stock' characters such as: the villain, the villains' sidekick, the hero, the damsel in distress etc. In this course students will begin to develop stagecraft and acting skills. Students will also explore how to successfully work with others as part of a small ensemble cast and have the opportunity to participate in a performance night, for family and friends at the end of each semester.



## ➤ **Media – New Media**

\*Estimated cost: \$10 Voluntary Contribution + \$40 Charge

Students will examine areas of the new media. This will include social media, music videos, film video games, and celebrity in the Twenty First Century. The course offers a mix of theory and practical, a good introduction to Senior School Media.

## ➤ **Music (full year - two electives)**

\*Estimated cost: \$20 Voluntary Contribution + \$60 Charge

Students in the IMMS Instrumental Music Program are required to study this course for the full year.

The musical genres covered in Year 9 are Reggae, Funk, Classical Music, and Film & TV Music.

In these courses, students will be provided with activities and learning opportunities in all aspects of music – notation, Kodaly – Solfa, listening, analysing, performing, arranging, composing, and music culture and history.



Assessment types will include Performance (ensemble and individual), Listening, Composing, Theory and Research (Music History). It is desirable but not essential to have completed Music in Year 8.

## ➤ **Photography**

\*Estimated cost: \$10 Voluntary Contribution + \$45 Charge

In Year 9 Portrait Photography, students will investigate the practical and theoretical aspects of black and white film and digital photography. Students will learn about the manual functions on a camera, image composition, and digital manipulation using Adobe Photoshop. They will be introduced to the darkroom environment and will learn how to process film and develop their own black and white imagery using darkroom processes. Students will understand the historical and conceptual underpinnings of photographic art works through the exploration of past and contemporary photographic artists. Students will experiment with camera technology and create a portfolio of film and digital imagery based upon art and design theory and its application to produce still-life, macro and other compositional arrangements.

### METHOD OF ASSESSMENT

Portfolio of practical tasks (Imagery) and written tasks; research, and investigation and response.

## ➤ **Portrait Photography**

\*Estimated cost: \$10 Voluntary Contribution + \$45 Charge

In this course students will investigate the practical and theoretical aspects of black and white film and digital photography as it relates specifically to portraiture. Students will learn about the manual functions on a camera, image composition, and digital manipulation using Adobe Photoshop. Students are introduced to the darkroom environment and will

learn how to process film and develop their own black and white imagery using darkroom processes. Students will understand the historical and conceptual underpinnings of photographic portrait artworks through the exploration of past and contemporary photographic portrait artists. Students will experiment with camera technology and create a portfolio of film and digital imagery based upon art and design theory and its application. They will develop photographic studio skills in lighting and learn the basics of photo shoot arrangement for portraits eg. backdrops, props, costume and make-up. Students will also learn to create simple lighting plans to achieve a variety of effects within their portrait imagery.

#### METHOD OF ASSESSMENT

Portfolio of practical tasks (Imagery) and written tasks; research and investigation, and response.

## TECHNOLOGY & ENTERPRISE

### ➤ **Wood Design**

\*Estimated cost: \$10 Voluntary Contribution + \$40 Charge

This course is designed to develop skills in working with wood to construct small projects. Students will be given the opportunity to use the Technology Process to create individual projects from wood.

### ➤ **Metal Jewellery**

\*Estimated cost: \$10 Voluntary Contribution + \$30 Charge

This course provides students with the opportunity to develop skills in the cutting and forming of different types of metal to a stage where they can design their own projects. A variety of jewellery items will be made. As skills develop students will be encouraged to design and construct items of their own choice.

### ➤ **Model Making**

\*Estimated cost: \$10 Voluntary Contribution + \$30 Charge

Students will develop skills and the knowledge required to manipulate materials including wood, metal and plastic to produce a variety of interesting models. The technology process will be utilised and developed whilst studying Model Making.

### ➤ **Technical Drawing**

\*Estimated cost: \$10 Voluntary Contribution + \$20 Charge

Through a variety of activities, students will learn how to read drawings and use various techniques to present drawings which create impact. Throughout the course a folio of work will be developed by students.

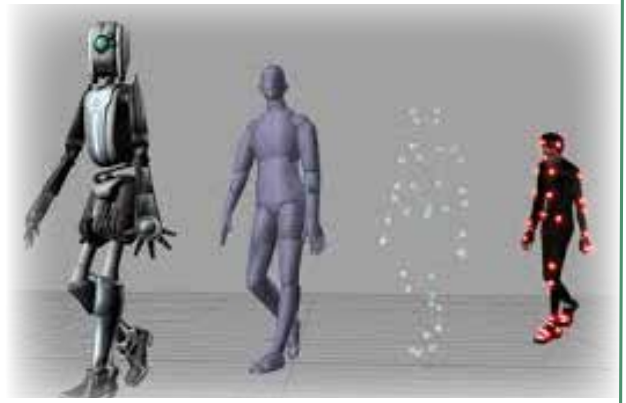
### ➤ **Technology Design & Production**

\*Estimated cost: \$10 Voluntary Contribution + \$20 Charge

This course takes a really practical and hands on approach to Information Technology. Using some of the latest software and hardware available, students will design and produce a range of products and learn some very useful



IT skills along the way. Students will develop skills and knowledge through a series of design challenges using such software and hardware as Comic Life, Photoshop, Lego Mindstorm (Robotics) and 3D printing. For example, students will develop their own superhero based on popular underground comic culture and produce and publish their own comic book.



## ➤ **Animation**

\*Estimated cost: \$10 Voluntary Contribution + \$10 Charge

This course allows students to work through the process of animation - starting at the planning stage and working towards the development stage. Students will create a working animation to be incorporated in an electronic product.

Software usage includes MS PowerPoint and Movie Maker, Adobe Flash, InDesign and Photoshop. Hardware used includes scanners, digital movie and still cameras.

## ➤ **Electronic Game Design**

\*Estimated cost: \$10 Voluntary Contribution + \$10 Charge

This course allows students to further their skills in the world of electronic game design with an emphasis on developing software skills and design knowledge. The course will look at the history of electronic game design and how it has influenced current and future designs. Software usage includes Adobe flash, Photoshop and Fireworks, as well as games development software.

## ➤ **Webpage Design**

\*Estimated cost: \$10 Voluntary Contribution + \$10 Charge

The overall outcome of this course is for students to design and build a website. There is an emphasis on online techniques. Software usage includes Microsoft PowerPoint and Movie Maker, Adobe Flash, Photoshop and Dreamweaver.

## ➤ **Fashion Sewing**

\*Estimated cost: \$10 Voluntary Contribution + \$40 Charge

No previous sewing experience required! The emphasis in this course is to develop basic sewing skills that can be used to create many exciting effects with fabrics, trims and products.

Students will have the opportunity to design and make a variety of fashion items.





## ➤ **Caring for Children**

\*Estimated cost: \$10 Voluntary Contribution + \$30 Charge

Through an emphasis on craft activities, students explore caring for children aged 2 years and over. This is a great course for babysitters or anyone planning a career in childcare.

## ➤ **Foods**

\*Estimated cost: \$10 Voluntary Contribution + \$60 Charge

This course will examine the role of food in our lives—the social, nutritional, ethical and vocational role that it plays in all cultures. Students will develop their food production (cooking) skills through a wide range of recipes from around the world. They will learn about safety in the kitchen, how to prepare and preserve food and present their cooking like a Masterchef. This course is very useful for any student wanting to be a little more independent or adventurous in the kitchen.

## **HEALTH, OUTDOOR & PHYSICAL EDUCATION**

### ➤ **Outdoor Adventure Program (full year - 2 electives) Approved Specialist Program**

\*Estimated cost: \$20 Voluntary Contribution + \$400 Program Fee

Students who have been accepted into the Outdoor Adventure Program are required to study the course for the full year.



### ➤ **Outdoor Recreation (Roping)**

\*Estimated cost: \$10 Voluntary Contribution + \$40 Charge

This is a highly practical subject, where students get to participate in abseiling and roping activities. This usually includes a day trip to Statham's Quarry to abseil the 35 and 40 metre cliffs.

### ➤ **Soccer Program (full year - 2 electives)**

\*Estimated cost: \$20 Voluntary Contribution + \$300 Program Fee

This is a continuation of the Year 8 specialist Soccer Program. All current Year 8 Soccer Program students need to choose this elective.

Students who wish to apply for entry to this program should see Mr Humphreys.

## ➤ **Advanced Netball**

\*Estimated cost: \$10 Voluntary Contribution + \$20 Charge

This course is designed for girls who already have some experience playing netball. It aims to enhance the skills, strategies, and tactics of the game. There will be an emphasis on developing students' skills to a high level or club standard, plus coaching and umpiring. There may be opportunity to compete against other schools within the area outside of school hours.

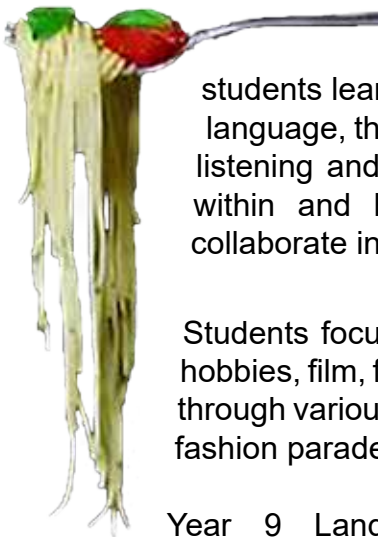
## **LANGUAGES**

### ➤ **Indonesian, Italian and Japanese (full year - 2 electives)**

\*Estimated cost \$20 Voluntary Contribution + \$20 Charge

Students must study their chosen language in both Semester 1 and 2.

Language is a life-long skill, which has a positive effect on students' intellectual and social capabilities.



Italian, Indonesian and Japanese students learn how to communicate in the target language, through reading a variety of texts, writing, listening and speaking. Students use the language within and beyond the classroom to interact and collaborate in their community and the globalised world.



Students focus on the topics of friendship, sustainable living in Europe and Asia, hobbies, film, food, fashion, school and festivals. Students learn about these aspects through various interactive and creative ways; role plays, student surveys, podcasts, fashion parades, i-movies, class magazines, and radio scripts and recordings.

Year 9 Language students are also given many learning experiences throughout the year including guest speakers, musical performers, cooking opportunities, cultural excursions and, in some years, overseas tours.

